



FuelTrax™

Marine Fuel Management

by



NAUTICAL
CONTROL
SOLUTIONS



Move Beyond Monitoring.™



FuelTrax™

Advances in digital technology brings new opportunities for marine fuel management. The patented* FuelTrax™ suite combines state-of-the-art vessel-based electronics with satellite communications and the power of the Internet to dramatically optimize vessel and fleet performance. FuelNet™, a powerful web portal and executive dashboard, stores and graphically displays fuel inventories, usage and vessel logistics on demand from your web browser. Use the FuelTrax Suite to perform...

Fuel Monitoring - Reduce Fuel Consumption

See fuel consumption rates, fuel tank levels, fuel transfers, alarms and engine conditions from the wheelhouse.

Fuel Optimization – Improve Fuel Efficiency

Increase fuel efficiency using FuelTrax recommended throttle settings: BestSpeed™ and BestEconomy™.

Fuel Inventory – Optimize Fuel Purchases

View fuel in individual tanks and across the fleet via the FuelNet web portal.

Fuel Accounting – Obtain Accurate Fuel Balance and Identify Discrepancies

Use fuel balance algorithms to track fuel inventory, refills, transfers and fuel discrepancies.

Fuel Logistics – Eliminate Guesswork on Locations and Fuel

Access FuelTrax Maps to show the route each vessel has taken and plot fuel usage, inventory and events against the voyage.

Crew Analysis – Support Best Practices

Use FuelTrax to compare performance between different crews on a vessel to reinforce training and best practices.

Engine Analysis – Improve Maintenance and Vessel Utilization

Better predict overhaul dates based on total fuel consumed and engine run-times.

Marine Technology Evaluations – Make Informed Decisions

Accurately evaluate alternative marine technologies based on detailed reports of consumption and vessel logistics.

Vessel and Fleet KPIs – Reduce Operating Cost

Compare daily key performance indicators (KPIs) from your desktop across the fleet.

Vessel Analysis – Improve Equipment Performance

Compare the history of detailed fuel and operating conditions about each vessel in the fleet to identify potential improvements in equipment and design profiles.





The FuelTrax Suite

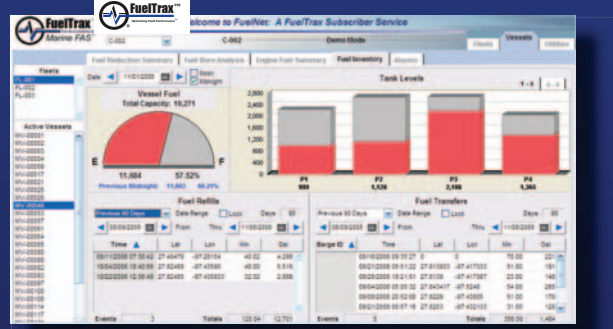
FuelTrax Vessel Monitoring System

The vessel-based FuelTrax Monitoring System is used by Vessel Operations to monitor fuel flow, optimize fuel efficiency and view fuel levels in tanks. FuelTrax includes advanced, accurate flow sensor technology and engine room electronics designed for the harsh marine environment. State-of-the-art software drives the advanced on-board electronics, communication and instrumentation within FuelTrax.

FuelNet, the integrated web portal, acquires vessel data from the FuelTrax Monitoring System for permanent archiving and display via a secure web browser. The integration of these technologies enables dramatic increases in fuel efficiencies and improved vessel performance.



FuelTrax: Vessel Monitoring System



FuelNet: Web Portal

FuelNet Web Portal and Executive Dashboard

FuelNet is the web-based component of the FuelTrax Suite, providing managers a fleet-wide view of vessel fuel consumption, efficiencies and logistics. This technology gives managers the ability to monitor the performance of their fleet from any location using a secure internet portal, which maintains a history of each vessel. Using Low Earth Orbit satellite communications, FuelTrax Monitoring Systems broadcast information collected from vessels to a secure data center. Graphical presentations of vessel information can be viewed via the FuelNet password-protected website. On-line access to vessel performance data creates a faster, more efficient channel of communication between the office and the vessel significantly reducing the time needed to generate reports required by management.

The FuelTrax Life-Cycle Value Program

To ensure sustained value from your investment in the FuelTrax Suite, Nautical Control Solutions offers a comprehensive - turn-key - three step process that spans initial evaluations, through implementation and long-term support. The three principal phases of the FuelTrax Life-Cycle Value Program include...

1. FleetStart™ – Structured Evaluation

The initial structured evaluation phase is designed to assess the impact of FuelTrax on one to five vessels in the fleet. Nautical Control Solutions' engineering team will help you select the best vessels for the evaluation as well as assist in the preparation of a business impact assessment that reflects findings from the evaluation.

2. FleetOut™ – Systematic Implementation

The FleetOut phase provides a systematic, planned implementation of FuelTrax on the balance of vessels in the fleet. Training for Vessel Operations and office staff is also conducted during this period.


3. FleetComplete™ – Comprehensive Support


Following installation, the Comprehensive Support program provides access to future product upgrades and new versions, as well as call center support. FuelTrax Support Engineers actively verify the health of FuelTrax Monitoring Systems on vessels worldwide to ensure uninterrupted operation and sustained economic value for customers.

Training

Train Vessel Operations and office staff to capture maximum value and enforce best practices.

FuelTrax and FuelNet are highly automated, well documented and easy to use. Like any tool, however, being properly trained in these technologies will increase their overall value to your operations. Training is an important part of the FuelTrax Life-Cycle Value Program, which occurs on two levels:

 Captain/Crew – Saving Fuel and Improving Vessel Performance with FuelTrax

 Management – Using FuelNet for Business Reporting and Vessel Management

Training commences from the time FuelTrax is commissioned on each vessel, when the Captain and crew are provided hands-on instruction in the use of FuelTrax. Customized classroom training on FuelNet is available at Nautical Control Solutions' facilities in Houston and/or on the customer's premises.

Monitoring
Optimization
Inventory
Accounting
Logistics
Evaluations
Analysis

www.FuelTrax.com

15534 West Hardy Road, Suite 100
Phone: (281) 209-3900

Houston, TX 77060
www.FuelTrax.com